



## BREAKFAST SAUSAGE

**Smithfield®**

SERVE WHAT YOU LOVE

TURN A GOOD  
MORNING INTO  
**GREAT**

FULLY COOKED OR RAW, PATTIES OR LINKS, OUR SAUSAGE  
CREATES DELICIOUSLY MEMORABLE MEALS ANY TIME OF DAY.



# SERVE UP A FRESH START

Smithfield® is committed to bringing the absolute freshest sausage to our customers.



Breakfast Sausage Patty Pepper Biscuit

# THE MORNING SUPERSTAR

Not all fresh sausages are created equal. The Smithfield® process begins when our fresh pork trimmings are chopped, ground and flavored with our proprietary blend of special spices. The sausage is then chilled to less than 40 degrees to ensure that every sausage produced has the absolute best flavor possible. All gluten-free and with no fillers, binders or MSG.

## WE START EVERY DAY FROM SCRATCH.

---

As we do with all our award-winning products, we use only raw materials from corn-fed Midwestern hogs to produce our sausage. Our state-of-the-art facility ensures quality from the beginning of the process to the very end.

## VARIETY IS THE SPICE OF LIFE.

---

Smithfield has many varieties of delicious sausage. From patties to links and fresh to fully cooked, we make a sausage for truly every situation.

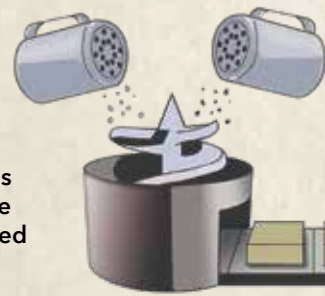




# FRESH BREAKFAST SAUSAGE

## FRESH BREAKFAST SAUSAGE

**1.** Fresh Smithfield pork trimmings are obtained in-house daily. The fresh trimmings are then blended with special Smithfield spices.



**2.** The blend is then formed into sausage patties and links.



**3.** The products are frozen, and Smithfield Fresh Sausage is ready for shipment.



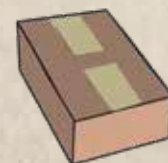
## FULLY COOKED BREAKFAST SAUSAGE



**4.** Smithfield Fully Cooked Sausages is broiled over an open flame.



**5.** The products are packaged and distributed from state-of-the-art distribution centers.



## SMITHFIELD® FRESH BREAKFAST SAUSAGE

### SILVER MEDAL AND BRONZE MEDAL SAUSAGE

Silver is our traditional high-standard product but available at a more affordable price for customers who still want excellent quality but need a lower cost. Bronze is best for cost-conscious customers; this level is driven more by price but still provides quality products.

### LEAN-TO-FAT RATIO (variance 2%)



58/42



52/48

#### Features

- Uses fresh trimmings directly from Smithfield facilities
- Made fresh daily
- Consistent sizing
- Layer packing
- Variety of sizes
- Links use specially formulated high-heat casings
- Up to 180 days' shelf life
- Gluten-free, no MSG

#### Benefits

- Firm bite, even texture and better flavor
- Consistently fresh sausage
- Exact portion cost
- Use only what you need, to minimize waste
- Versatility of usage
- Quick cook time and variety of cooking methods
- Extended freshness
- Better-for-you choice





SMITHFIELD® FULLY COOKED SAUSAGE

No need to compromise on quality, flavor or consistency when you serve Smithfield Fully Cooked Sausage. Made from superior cuts of lean pork and 100% natural spices, this easy-to-prepare sausage delivers a firm bite with authentic Smithfield flavor.

Features

- Fully cooked
- USDA-inspected cuts of lean pork
- Exact pieces per case
- Up to 240 days’ shelf life
- Multiple sizes available
- Individually quick frozen (IQF)
- No MSG, no hormones, no artificial color or flavor

Benefits

- No shrinkage, less waste, quick preparation
- Firm bite, superior texture and authentic flavor
- Reliable portion control
- Extended freshness
- Versatility of usage
- Fresher final product
- Clean label

Sausage-Stuffed French Toast



Fully Cooked Sausage

GTINs	PRODUCT DESCRIPTION	NET WGT	CASE CUBE	DIMENSIONS (L X W X H)	TI X HI
PATTIES-FC					
10045300293292	Smithfield® Fully Cooked Breakfast Sausage Patty, Bronze Medal, 2 oz, 10 lb, Frozen	10	0.55	16 x 10 x 5.938	12 x 11
10045300304233	Smithfield Fully Cooked Breakfast Turkey Sausage Patty, Bronze Medal, 1.4 oz, 10 lb, Frozen	10	0.55	16 x 10 x 5.938	12 x 11
00025468111150	Smithfield Fully Cooked Original Sausage Patty, Silver Medal, 1 oz, Child Nutrition, 10 lb, Frozen	10	0.55	16 x 10 x 5.938	12 x 12
00025468111051	Smithfield Fully Cooked Original Sausage Patty, Silver Medal, 1.5 oz, Child Nutrition, 10 lb, Frozen	10	0.55	16 x 10 x 5.938	12 x 12
00025468111006	Smithfield Fully Cooked Original Sausage Patty, Silver Medal, 2 oz, Child Nutrition, 10 lb, Frozen	10	0.567	16 x 10 x 6.125	12 x 12
00025468447501	Smithfield Fully Cooked Sausage Patty, Bronze Medal, 2 oz, 10 lb, Frozen	10	0.556	16 x 10 x 6	12 x 12
00070247175397	Smithfield Fully Cooked Sausage Patty, Dixie Skillet, 1.5 oz, 10 lb, Frozen	10	0.567	16 x 10 x 6.125	12 x 12
00070247138149	Smithfield Fully Cooked Sausage Patty, Silver Medal, 1.5 oz, 10 lb, Frozen	10	0.556	16 x 10 x 6	12 x 12
00070247138156	Smithfield Fully Cooked Sausage Patty, Silver Medal, 2 oz, 10 lb, Frozen	10	0.55	16 x 10 x 5.938	12 x 12
00070247138408	Smithfield Fully Cooked Sausage Patty, Silver Medal, 2 oz, 3.875 inch Wide, 10 lb, Frozen	10	0.55	16 x 10 x 5.938	12 x 12
10070800222664	Smithfield Fully Cooked Sausage Patty, 1.5 oz, 3/10 lb, Frozen	30	1.541	16 x 13.25 x 12.563	9 x 6
00025468711053	Smithfield Fully Cooked Turkey Sausage Patty, Silver Medal, 1.47 oz, 10 lb, Frozen	10	0.667	16 x 12 x 6	10 x 12
LINK-FC					
00070247137623	Smithfield Fully Cooked Sausage Link, Silver Medal, 10 lb, Frozen	10	0.499	15.875 x 9.875 x 5.5	12 x 12
00070247138170	Smithfield Fully Cooked Skinless Sausage Link, Silver Medal, 20/1 lb, 10 lb, Frozen	10	0.499	15.875 x 9.875 x 5.5	12 x 12
00070247137616	Smithfield Fully Cooked Skin-On Sausage Link, Silver Medal, 20/1 lb, 10 lb, Frozen	10	0.499	15.875 x 9.875 x 5.5	12 x 12
00025468211058	Smithfield Fully Cooked Skin-On Sausage Link, Silver Medal, Original, 1 oz, Child Nutrition, 10 lb, Frozen	10	0.509	16 x 10 x 5.5	12 x 12
10045300292912	Smithfield Fully Cooked Breakfast Sausage Link, Bronze Medal, Skinless, 10 lb, Frozen	10	0.492	16 x 10 x 5.313	12 x 12
00070247140722	Smithfield Fully Cooked Skin-On Sausage Link, 1.4 oz, 10 lb, Frozen	10	0.499	15.875 x 9.875 x 5.5	12 x 12
TOPPINGS & CRUMBLES-FC					
20070247182269	Smithfield Fully Cooked Sausage Crumbles, Silver Medal, 12/1 lb, Frozen	12	0.856	17.75 x 12.125 x 6.875	8 x 11
10070247140873	Smithfield Fully Cooked Italian Sausage Topping, Silver Medal, 2/5 lb, Frozen	10	0.556	16 x 10 x 6	12 x 12

Fresh Sausage

GTINs	PRODUCT DESCRIPTION	NET WGT	CASE CUBE	DIMENSIONS (L X W X H)	TI X HI
LINK-FRESH					
00070247133397	Smithfield Sausage Link, Bronze Medal, 52% Lean, 10 lb, Frozen	10	0.321	10.875 x 8.875 x 5.75	16 x 7
00070247133366	Smithfield Sausage Link, Bronze Medal, Skinless, 52% Lean, 1 oz, 10 lb, Frozen	10	0.321	10.875 x 8.875 x 5.75	16 x 7
00070247138095	Smithfield Mild Sausage Link, Silver Medal, 58% Lean, 1 oz link, 10 lb, Frozen	10	0.321	10.875 x 8.875 x 5.75	16 x 7
00070247131706	Smithfield Sausage Link, Silver Medal, 58% Lean, 2 oz link, 10 lb, Frozen	10	0.321	10.875 x 8.875 x 5.75	16 x 7
00070247131096	Smithfield Sausage Link, Silver Medal, 1 oz link, 10 lb, Frozen	10	0.328	10.875 x 8.875 x 5.875	16 x 7
10070100020571	Smithfield Sausage Link, Silver Medal, Collagen Casing, 16 Count, 10 lb, Frozen	10	0.296	12 x 8.125 x 5.25	18 x 6
10070100020595	Smithfield Sausage Link, Silver Medal, Collagen Casing, 8 Count, 10 lb, Frozen	10	0.296	12 x 8.125 x 5.25	18 x 6
00070247130327	Smithfield Sausage Link, Silver Medal, 16 Count, 10 lb, Frozen	10	0.321	10.875 x 8.875 x 5.75	16 x 7
10070100020557	Smithfield Sausage Link, Silver Medal, 16 Count, 10 lb, Frozen	10	0.296	12 x 8.125 x 5.25	18 x 6
20070800224436	Smithfield Sausage Link, Silver Medal, Low Sodium, Group Housing, 16 Count, 10 lb, Frozen	10	0.321	10.875 x 8.875 x 5.75	16 x 7
00070247175168	Smithfield Mild Italian Sausage Link, Silver Medal, 4/1, 10 lb, Frozen	10	0.499	15.875 x 9.875 x 5.5	12 x 12
PATTIES-FRESH					
00070247134301	Farmland Sausage Patty, FMX, Silver Medal, 4 oz, 12 lb, Frozen	12	0.358	13.875 x 9.375 x 4.75	13 x 8
00070247133359	Farmland Sausage Patty, Silver Medal, 58% Lean, 2 oz, 12 lb, Frozen	12	0.413	14.875 x 7.375 x 6.5	15 x 7
ROLLS-FRESH					
10070247130102	Smithfield Sausage Roll, Silver Medal, 58% Lean, 2/6 lb, Frozen	12	0.371	15.125 x 8.688 x 4.875	12 x 9
00070100020208	Smithfield Sausage Roll, Silver Medal, 8/3 lb, Frozen	24	0.629	13.5 x 11.5 x 7	10 x 5





## From Unbuckle-Your-Belt Breakfasts to Late-Night Munchies, We've Got It All.

If you love serving delicious meat, Smithfield® is here to help you take it up a notch. Our passion for all things protein makes us the perfect partner to share with you the latest innovations and trends that will keep your business ahead of the game. When you're ready to take your menu to a whole new level, we'll "meat" you there – contact your Smithfield Culinary representative, call 888-327-6526 or visit [SmithfieldCulinary.com/Smithfield](https://SmithfieldCulinary.com/Smithfield).

Scan for a  
free sample.



**Smithfield**

**Smithfield**  
**SMOKE N**  
**FAST**



**Follow us on Instagram!**  
**@SmithfieldCulinary**





**BACON**

**Smithfield®**

**SERVE WHAT YOU LOVE**

**TIME TO BRING HOME  
A BETTER  
BACON**

**AT SMITHFIELD, WE'RE "BACON" ALL THE RULES WHEN  
IT COMES TO REAL AUTHENTIC HARDWOOD SMOKED FLAVOR .**




# Smithfield®

SIMPLY THE BEST

# BACON

**As the popularity of bacon continues to explode, there seems to be no limit to its sizzling versatility. From salads and sandwiches to soups and desserts, chefs everywhere are concocting creations with Smithfield's most famous pork cut.**

From the first step to the last, Smithfield cuts no corners and spares no expense to help your customers bring home the absolute best bacon available. Every slice of bacon that Smithfield produces comes exclusively from corn-fed hogs, processed in our own state-of-the-art facilities always using fresh (never frozen) bellies to ensure that our bacon is second to none when it comes to quality.



Smithfield Bacon Monte  
Cristo Waffle Sandwich



# THE HIGHEST STANDARDS TO MEET THE HIGHEST EXPECTATIONS

## To be the best, we believe you have to taste the best.

That's why when it comes to Smithfield Bacon, you can be sure it has real authentic hardwood flavor from real hickory or applewood - we never use liquid smoke as do some of our competitors. The result is evenly smoked bacon with a deep mahogany color and a rich, authentic flavor that permeates each delicious slice.

## There's No Mistakin' the Taste of Smithfield Bacon

- Each belly is carefully hand-trimmed for consistent sizing.
- Fresh bellies are used for better taste, not frozen like some competitors'.
- Bellies are smoked over natural hardwood chips for consistent flavor.
- Every belly meets strict inspection requirements.
- We use state-of-the-art slicing equipment, which ensures consistent slice thickness.
- Our dedicated quality assurance experts help guarantee the highest-quality bacon possible every time.
- Leading-edge technology delivers consistent slice count and portion control.





# SMITHFIELD BACON

All Smithfield Bacon is made fresh from Smithfield pork bellies, cured with a special Smithfield cure and hardwood-smoked for true bacon flavor. Smithfield then grades and sorts the bacon into three value levels—Gold, Silver and Bronze Medal.

## Facts/Features

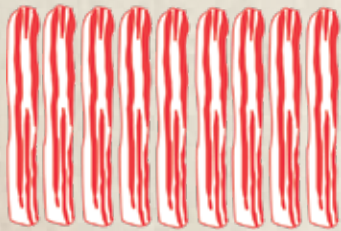
- Natural hickory or applewood smoked
- 1-PC box
- No liquid smoke; no MSG
- Made from fresh pork bellies
- Guaranteed slice count
- Poly-lined boxes or gas-flushed packaging

## Benefits

- True country bacon flavor
- Reduced chance of bacon crushing
- No artificial ingredients; no aftertaste
- No frozen bellies
- Portion control; greater profit
- Minimizes freezer burn

## SLICE OPTIONS

### Single Sliced Bacon



Layout-style bacon on parchment paper for ease of preparation

### Shingled Sliced Bacon



Layered bacon for convenient separation of slices

### Slab Sliced Bacon



Sliced slab bacon as an economical choice

Gold Medal

Silver Medal

Bronze Medal

Flank End





# THE CURE FOR THE COMMON BACON



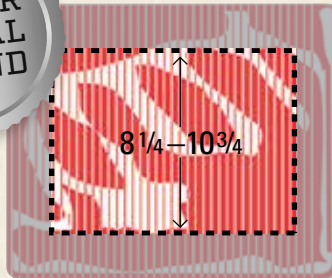
## GOLD MEDAL



- Double smoked
- Made from smaller, leaner bellies
- Center cut
- Extra-trimmed for leaner bacon
- Finest-quality bacon for the most discerning customers
- Also available as USDA certified single-sliced bacon, great for wrapping pork tenderloins or filets, poultry or beef



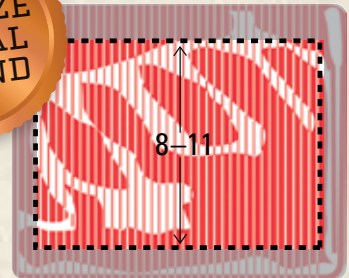
## SILVER MEDAL



- The most popular bacon
- Traditional, top-quality bacon
- Trimmed and graded to high specifications for leanness, quality and consistency
- Uniform slices
- Wide variety of slice counts for easy applications



## BRONZE MEDAL



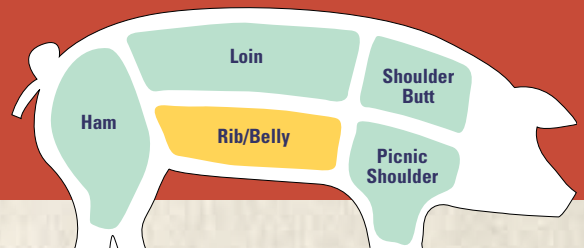
- Same high-quality process
- Sliced from larger bellies to provide competitive pricing

## NEED LONGER SHELF LIFE?

Smithfield also makes a variety of bacon products available in gas flushed and frozen packaging that provide an extended shelf life. For more information, ask your Smithfield Culinary representative.

Flank End

Shoulder End

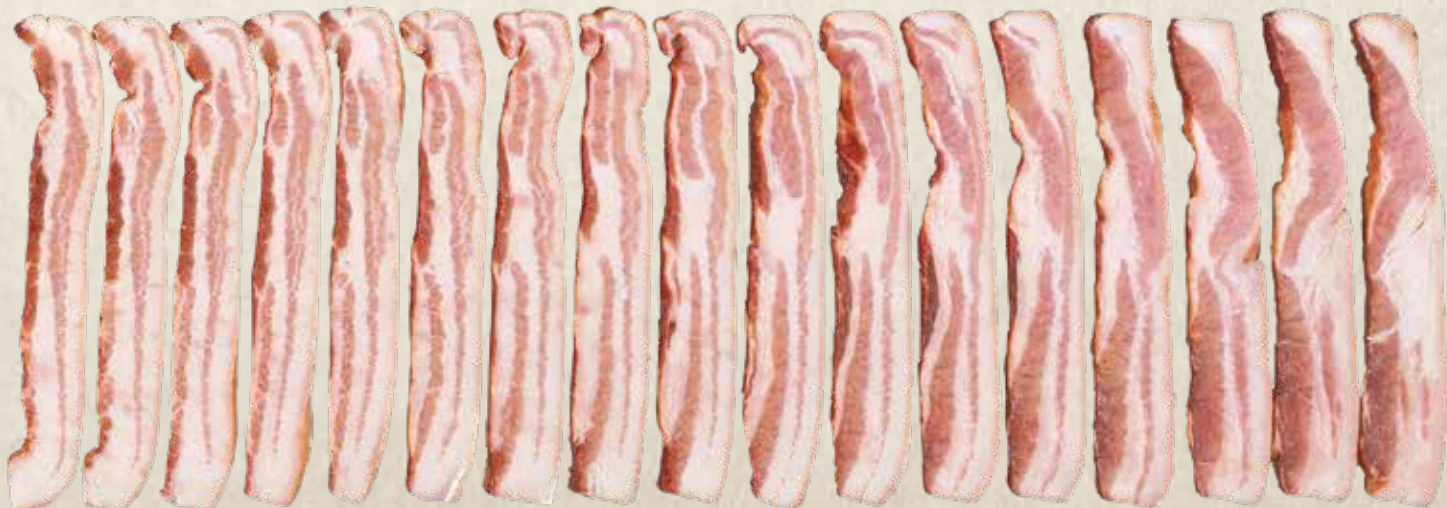


Gold Medal

Silver Medal

Bronze Medal

Shoulder End





# SMITHFIELD FULLY COOKED BACON

Great-tasting Smithfield Fully Cooked Bacon not only saves time and labor, but also gives you more opportunities to serve bacon on more menu items, all day long. Flavor, versatility and convenience—now that's foodservice.

## Facts/Features

- Fully cooked
- Great taste
- Versatile

## Benefits

- Convenient and time-saving preparation
- Consistent flavor in every case
- Increased customer satisfaction

## DICED BACON & BACON BITS

Smithfield Fully Cooked Bacon Bits, 1/4" x 1/4"

Made from real bacon ends and pieces



Smithfield Fully Cooked Fine Bacon Bits, 1/8" x 1/8"

Made from real bacon ends and pieces



Smithfield Fully Cooked Bacon Pieces, diced, 1/2"

Made from fully cooked bacon slices



Bacon Waffles with  
Maple Sausage Gravy



# SLICED, DICED OR ROUNDED



## ROUND BACON

---

Smithfield Fully Cooked Round Bacon  
Made from actual rolled bellies



## SLICED BACON

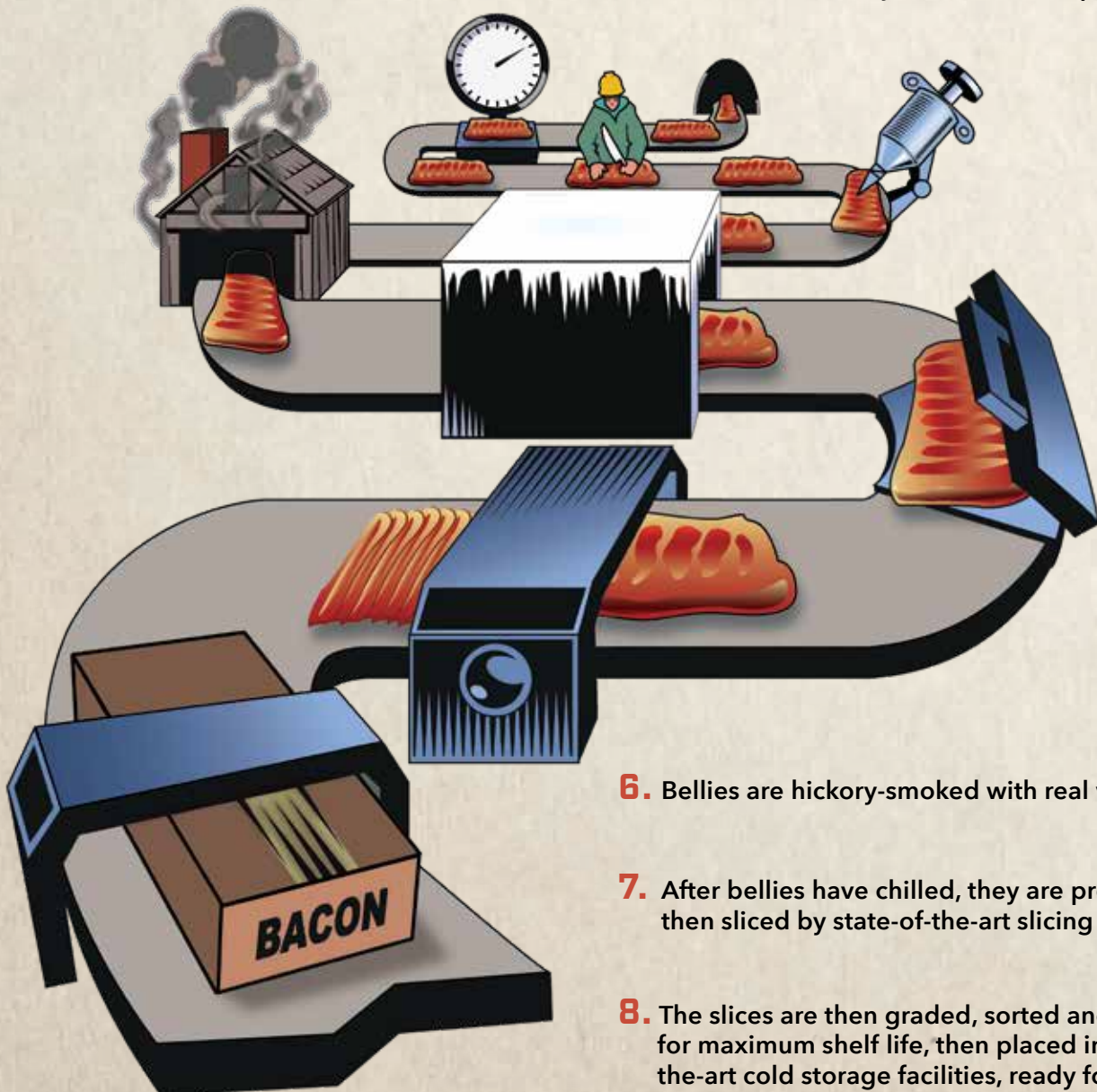
---

Smithfield Fully Cooked Regular Sliced Bacon



# OUR RTC BACON IS **PAINSTAKINGLY** CRAFTED FOR **AMAZING RESULTS**

- 1.** Smithfield processes only lean, butcher-type hogs, averaging 290 lbs., from our facilities.
- 2.** The carcass is broken down into primal cuts – hams, bellies, loins, etc.
- 3.** Bellies are sorted by size and weight.
- 4.** Bellies are hand-trimmed to exact product specifications for consistency.
- 5.** Bellies are injected with our special cure.



- 6.** Bellies are hickory-smoked with real wood chips.
- 7.** After bellies have chilled, they are pressed and then sliced by state-of-the-art slicing equipment.
- 8.** The slices are then graded, sorted and packed for maximum shelf life, then placed in state-of-the-art cold storage facilities, ready for shipment.



## Read to Eat Bacon

GTINs	PRODUCT DESCRIPTION	NET WGT	DIMENSIONS (L X W X H)	CASE CUBE	CASES/ PALLET
<b>SLICES-RTE</b>					
20043200126525	Smithfield Fully Cooked Bacon, Gold Medal, Thick Sliced, 300 count, 2/3 lb	6	14 x 10.13 x 3.25	0.267	12 x 14
10070247171051	Smithfield Fully Cooked Bacon, Silver Medal, 300 count, 2/2.5 lb	5	14.375 x 10.125 x 3.25	0.274	11 x 14
20027815117291	Smithfield Fully Cooked Bacon, Silver Medal, 600 count, 6/1.133 lb	6.8	14.375 x 10.125 x 6.50	0.547	11 x 10
10070247125009	Smithfield Fully Cooked Bacon, Silver Medal, Sliced, 300 count, 2/1.605 lb	3.21	14.375 x 10.125 x 3.25	0.274	11 x 14
10070247172331	Smithfield Fully Cooked Bacon, Bronze Medal, Sliced, 300 count, 2/1.25 lb	2.5	14.375 x 10.13 x 3.25	0.274	11 x 14
10043200121561	Smithfield Fully Cooked Bacon, Sliced, Bronze Medal, Undiced, 2/5 lb	10	12.25 x 9.63 x 7.5	0.512	13 x 9
20043200126310	Smithfield Fully Cooked Bacon, Applewood Smoked, 300 Count, 3/2.5 lb	6	14.25 x 10.13 x 4.5	0.376	12 x 12
10070800222794	Smithfield Fully Cooked Bacon, Single Slice, 300 count, 2/5 lb	10	14.375 x 10.125 x 4.5	0.379	12 x 10
10070800222800	Smithfield Fully Cooked Bacon, Single Slice, 320 Count, 4/2 lb	8	14.375 x 10.125 x 4.5	0.379	12 x 10
10070800052049	Smithfield Fully Cooked Bacon, Sliced, Roasted, 1800 count, 9/2.55 lb	23	15.875 x 9.25 x 12.563	1.068	11 x 5
<b>ROUNDS-RTE</b>					
10043200120335	Smithfield Fully Cooked Bacon Rounds, 192 Count, 2/1.2 lb	2.4	14 x 10.13 x 3.25	0.267	11 x 20
<b>DICED, CHIPS &amp; BITS-RTE</b>					
20043200126495	Smithfield Fully Cooked Bacon Bits, 3/4", 2/5 lb, Gas Flushed	10	15 x 9 x 5.125	0.4	13 x 10
10043200120038	Smithfield Fully Cooked Bacon, 1/2 inch Bits, 2/5 lb	10	15.313 x 9.313 x 6.25	0.516	13 x 9
20027815117185	Smithfield Fully Cooked Bacon, 1/2" Bits, 2/5 lb	10	14.625 x 7.625 x 8.25	0.532	15 x 7
20027815003402	Smithfield Fully Cooked Bacon, 1/2" Chips, 2/5 lb	10	13.313 x 13.313 x 5.5	0.564	13 x 10
10043200122964	Smithfield Fully Cooked Bacon, 1/4" Bits, 2/5 lb	10	15 x 9 x 5.125	0.4	13 x 10
10070247172874	Smithfield Fully Cooked Bacon, 1/4" Bits, 2/5 lb	10	15.313 x 9.313 x 6.25	0.516	13 x 10
10070800142290	Smithfield Fully Cooked Bacon, 1/4" Bits, 2/5 lb	10	15.313 x 9.313 x 6.25	0.516	13 x 9
10043200120021	Smithfield Fully Cooked Bacon, 1/4" Bits, 36%, 2/5 lb	10	15.313 x 9.313 x 6.25	0.516	13 x 9
10070247172881	Smithfield Fully Cooked Bacon, 1/8"Bits, 2/5 lb	10	15.313 x 9.313 x 6.25	0.516	13 x 10
20043200126631	Smithfield Fully Cooked Bacon, 3/4" Bits, 2/5 lb	10	15 x 9 x 5.125	0.4	13 x 10
20027815003396	Smithfield Fully Cooked Bacon, 3/4" Bits, 2/5 lb	10	14.625 x 7.625 x 8.25	0.532	15 x 7
10070800440044	Smithfield Fully Cooked Bacon, 3/8" Bits, 4/5 lb, Frozen	20	15.25 x 10.25 x 9.5	0.859	10 x 5
10043200126771	Smithfield Fully Cooked Bacon, All Natural 1/4" Bits, 28%, 2/5 lb	10	15 x 9 x 5.125	0.4	13 x 10
10043200124869	Smithfield Fully Cooked Bacon, All Natural 1/4" Bits, 31%, 2/5 lb, Frozen	10	15.313 x 9.313 x 6.25	0.516	13 x 10
20043200126518	Smithfield Fully Cooked Bacon, All Natural, 1/2" Bits, 2/5 lb	10	15.375 x 9.375 x 6.25	0.521	13 x 10
10043200126177	Smithfield Fully Cooked Bacon, Applewood Smoked Topping, 2/5 lb	10	15 x 9 x 5.125	0.4	13 x 9
10043200120823	Smithfield Fully Cooked Bacon, Applewood Smoked Topping, 2/5 lb	10	15 x 9 x 5.125	0.4	13 x 10
10043200125194	Smithfield Fully Cooked Bacon, Hickory Smoked Topping, 4/5 lb	20	15.563 x 10.563 x 10.125	0.963	10 x 5



## Ready to Cook Bacon

GTINs	PRODUCT DESCRIPTION	NET WGT	DIMENSIONS (L X W X H)	CASE CUBE	CASES/ PALLET
SLICED-RTC					
70800179077	Smithfield RTC Bacon, Platinum, Log Smoked, Applewood, Single Slice, 10-14 Slices per lb, 15 lb, Gas-Flushed	15	19.813 x 11.313 x 4.125	0.535	8 x 12
20070800225693	Smithfield RTC Bacon, Platinum, Pepper Encrusted, Single Slice, 12-14 Slices per lb, 15 lb, Frozen	15	17.375 x 11.375 x 4.75	0.543	9 x 11
70247171962	Smithfield RTC Bacon, Gold Medal, Apple Cider, Single Slice, 10-14 Slices per lb, 15 lb, Gas-Flushed	15	18.375 x 11.375 x 4.75	0.575	8 x 12
70247171863	Smithfield RTC Bacon, Gold Medal, Apple Cider, Single Slice, 14-18 Slices per lb, 15 lb, Gas-Flushed	15	18.375 x 11.375 x 4.75	0.575	8 x 12
70247171856	Smithfield RTC Bacon, Gold Medal, Apple Cider, Single Slice, 18-22 Slices per lb, 15 lb, Gas-Flushed	15	18.375 x 11.375 x 4.75	0.575	8 x 12
10070100065459	Smithfield RTC Bacon, Gold Medal, Applewood Smoked, Single Slice, 14-17 Slices per lb, 15 lb, Gas-Flushed	15	19.875 x 11.375 x 4.75	0.621	8 x 12
10070247175059	Smithfield RTC Bacon, Gold Medal, Applewood Smoked, Single Slice, 6-8 Slices per lb, 2/10 lb, Gas-Flushed	20	19.125 x 11.125 x 6.375	0.785	8 x 8
70247158642	Smithfield RTC Bacon, Gold Medal, Double Smoked, HRI, 18-22 Slices per lb, 15 lb, Gas-Flushed, Frozen	15	18.375 x 11.375 x 4.75	0.575	8 x 11
70247158635	Smithfield RTC Bacon, Gold Medal, Double Smoked, HRI, 14-18 Slices per lb, 15 lb, Gas-Flushed, Frozen	15	18.375 x 11.375 x 4.75	0.575	8 x 11
20070800225976	Smithfield RTC Bacon, Gold Medal, Lower Sodium, Single Slice, 14-18 Slices per lb, 15 lb, Gas-Flushed	15	19.875 x 11.375 x 4.25	0.556	8 x 11
70247125460	Smithfield RTC Bacon, Gold Medal, Lower Sodium, Single Slice, 18-22 Slices per lb, 15 lb, Gas-Flushed, Frozen	15	18.375 x 11.375 x 4.75	0.575	8 x 11
70247125231	Smithfield RTC Bacon, Gold Medal, Single Slice, 14-16 Slices per lb, 15 lb, Gas-Flushed, Frozen, Certified	15	19.875 x 11.375 x 4.25	0.556	8 x 11
70247157256	Smithfield RTC Bacon, Gold Medal, Single Slice, 14-18 Slices per lb, 15 lb, Gas-Flushed	15	18.375 x 11.375 x 4.75	0.575	8 x 12
70247123244	Smithfield RTC Bacon, Gold Medal, Single Slice, 18-22 Slices per lb, 15 lb, Gas-Flushed	15	18.375 x 11.375 x 4.75	0.575	8 x 12
70247174833	Smithfield RTC Bacon, Silver Medal, Applewood Smoked, Single Slice, 14-18 Slices per lb, 15 lb, Gas-Flushed, Frozen	15	19.875 x 11.375 x 4.25	0.556	8 x 12
70247174840	Smithfield RTC Bacon, Silver Medal, Applewood Smoked, Single Slice, 18-22 Slices per lb, 15 lb, Gas-Flushed, Frozen	15	19.875 x 11.375 x 4.25	0.556	8 x 12
70247172761	Smithfield RTC Bacon, Silver Medal, Double Smoked, HRI, 10-14 Slices per lb, 30 lb, Frozen	30	24.875 x 11.5 x 5.75	0.952	6 x 8
10070247175844	Smithfield RTC Bacon, Silver Medal, Double Smoked, HRI, 16-20 Slices per lb, 2/15 lb, Gas-Flushed	30	18.625 x 11.5 x 9.75	1.209	8 x 6
10070100065442	Smithfield RTC Bacon, Silver Medal, Double Smoked, Single Slice, 10-12 Slices per lb, 15 lb, Gas-Flushed	15	17.375 x 11.375 x 4.75	0.543	9 x 12
10070100065008	Smithfield RTC Bacon, Silver Medal, Single Slice, 14-17 Slices per lb, 2/15 lb, Gas-Flushed	30	17.375 x 11.375 x 8.75	1.001	9 x 6
10070100065091	Smithfield RTC Bacon, Silver Medal, Single Slice, 18-22 Slices per lb, 2/15 lb, Gas-Flushed	30	17.375 x 11.375 x 9.25	1.058	9 x 6
70247170101	Smithfield RTC Bacon, Silver Medal, HRI, Northwest, 10-14 Slices per lb, 15 lb, Gas-Flushed	15	18.375 x 11.375 x 4.75	0.575	8 x 12
70247170095	Smithfield RTC Bacon, Silver Medal, HRI, Northwest, 14-18 Slices per lb, 15 lb, Gas-Flushed	15	18.375 x 11.375 x 4.75	0.575	8 x 12
70247170125	Smithfield RTC Bacon, Silver Medal, HRI, Northwest, 18-22 Slices per lb, 15 lb, Gas-Flushed	15	18.375 x 11.375 x 4.75	0.575	8 x 12
70247159717	Smithfield RTC Bacon, Silver Medal, HRI, 18-22 Slices per lb, 15 lb, Frozen	15	18.375 x 11.375 x 4.75	0.575	8 x 12
70247181589	Smithfield RTC Bacon, Silver Medal, Northeast, Single Slice, 18-22 Slices per lb, 15 lb, Gas-Flushed	15	19.875 x 11.375 x 4.75	0.621	8 x 12
70247157652	Smithfield RTC Bacon, Silver Medal, Single Slice, 18-22 Slices per lb, 15 lb, Gas-Flushed	15	19.875 x 11.375 x 4.75	0.621	8 x 12



## Ready to Cook Bacon

GTINs	PRODUCT DESCRIPTION	NET WGT	DIMENSIONS (L X W X H)	CASE CUBE	CASES/ PALLET
70247158260	Smithfield RTC Bacon, Silver Medal, Single Slice, 22-26 Slices per lb, 15 lb, Frozen	15	19.875 x 11.375 x 4.25	0.556	8 x 12
70247158246	Smithfield RTC Bacon, Silver Medal, Single Slice, 14-18 Slices per lb, 15 lb, Frozen	15	19.375 x 11.375 x 4.25	0.542	8 x 12
70247158253	Smithfield RTC Bacon, Silver Medal, Single Slice, 18-22 Slices per lb, 15 lb, Frozen	15	19.875 x 11.375 x 4.25	0.556	8 x 12
70247174987	Smithfield RTC Bacon, Silver Medal, Uncured, Single Slice, 13-17 Slices per lb, 15 lb, Gas-Flushed	15	19.875 x 11.375 x 4.75	0.621	8 x 12
20070800227505	Smithfield RTC Bacon, Silver Medal, Uncured, Single Slice, 20-24 Slices per lb, 15 lb, Gas-Flushed	15	19.875 x 11.375 x 4.75	0.621	8 x 12
10043200146069	Smithfield RTC Bacon, Bronze Medal, Applewood Smoked, Single Slice, 14-16 Slices per lb, 2/15 lb, Gas-Flushed	30	17.125 x 10.5 x 9.188	0.956	9 x 6
70247758514	Smithfield RTC Bacon, Bronze Medal, HRI, 10-14 Slices per lb, 30 lb, Frozen	30	18.875 x 11.375 x 7.25	0.901	8 x 7
70247175694	Smithfield RTC Bacon, Bronze Medal, HRI, 14-18 Slices per lb, 15 lb, Gas-Flushed	15	19.875 x 11.375 x 4.75	0.621	8 x 12
70247123411	Smithfield RTC Bacon, Bronze Medal, HRI, 14-18 Slices per lb, 25 lb, Gas-Flushed	25	19.125 x 11.125 x 6.375	0.785	8 x 8
70247723420	Smithfield RTC Bacon, Bronze Medal, HRI, 14-18 Slices per lb, 30 lb, Frozen	30	18.875 x 11.375 x 7.25	0.901	8 x 7
70247175700	Smithfield RTC Bacon, Bronze Medal, HRI, 18-22 Slices per lb, 15 lb, Gas-Flushed	15	19.875 x 11.375 x 4.75	0.621	8 x 12
70247123190	Smithfield RTC Bacon, Bronze Medal, HRI, 18-22 Slices per lb, 25 lb	25	19.125 x 11.125 x 6.375	0.785	8 x 8
20070800225983	Smithfield RTC Bacon, Bronze Medal, Single Slice, 18-22 Slices per lb, 15 lb, Gas-Flushed, Frozen	15	18.62 x 11.81 x 4.06	0.52	8 x 12
10070800045089	Smithfield RTC Bacon, Bronze Medal, Single Slice, 14-18 Slices per lb, 15 lb, Frozen	15	18.625 x 11.75 x 4	0.507	8 x 12
10070800045096	Smithfield RTC Bacon, Bronze Medal, Single Slice, 18-22 Slices per lb, 15 lb, Frozen	15	19.375 x 11.375 x 4.25	0.542	8 x 12
70247171870	RTC Bacon, Rocky Mountain Pride, Apple Cider, Single Slice, 15 lb, Frozen	15	19.875 x 11.375 x 4.25	0.556	8 x 11
70247125507	RTC Bacon, Rocky Mountain Pride, Single Slice, 15 lb, Frozen	15	19.875 x 11.375 x 4.25	0.556	8 x 11
<b>DICED AND ENDS&amp;PIECES-RTC</b>					
70247171986	Smithfield RTC Bacon, Ends & Pieces, 15 lb, Frozen	15	18.375 x 11.375 x 4.75	0.575	8 x 11
10070247175073	Smithfield RTC Diced Bacon, 2/5 lb, Frozen	10	10.875 x 8.875 x 5.75	0.321	16 x 7
10070247174908	Smithfield RTC Diced Bacon, 3/10 lb, Frozen	30	15.25 x 11.375 x 7.875	0.791	10 x 7





## Everything Your Customers Love. Even More That Will Surprise Them.

If you love serving delicious meat, Smithfield is here to help you take it up a notch. Our passion for all things protein makes us the perfect partner to share with you the latest innovations and trends that will keep your business ahead of the game. When you're ready to take your menu to a whole new level, we'll "meat" you there – contact your Smithfield Culinary representative, call 888-327-6526 or visit [SmithfieldCulinary.com/Smithfield](https://SmithfieldCulinary.com/Smithfield).



**Smithfield**



**Follow us on Instagram!**  
**@SmithfieldCulinary**