

Violife

100% Vegan



free from DAIRY
SOY • GLUTEN • LACTOSE
NUTS • PRESERVATIVES



52%

of Americans are
trying to eat more
more plant-based
meals.

Datassential SNAP™,
2019

1 IN 3

Americans are
lactose intolerant

**GROW YOUR BUSINESS BY GIVING YOUR
GUESTS THE DELICIOUS DAIRY-FREE
CHEESE OPTIONS THEY'RE LOOKING FOR.**

- ✓ Looks & tastes just like cheese
- ✓ Free from top allergens, so you can serve everyone
- ✓ Longer shelf life means less waste



VIOLIFEFOODS.COM

“More and more of my guests have dietary restrictions – I need a great non-dairy cheese that will keep them coming back.”

Violife vs. THE COMPETITION

	VIOLIFE	OTHERS
Looks like cheese	✓	X
Tastes like cheese	✓	X
Soy & nut free	✓	X

MENU SUGGESTIONS

- 1. Cheese Pizza with Mozzarella & Parmesan
- 2. Mac & Cheese with Cheddar Shreds
- 3. Veggie Panini with Provolone Slices
- 4. Fresh Greek Salad with Feta



USAGE AND STORAGE

Keep refrigerated. Do not freeze.



GTIN CODE: 11810934030778
DOT FOODS CODE: 722459

Ask your distributor to order Violife from DOT Foods. Or, contact us at UpfieldProfessional.com to learn more about your ordering options.

VIOLIFE JUST LIKE CREAM CHEESE ORIGINAL

INGREDIENTS: FILTERED WATER, COCONUT OIL, POTATO STARCH, SALT (SEA SALT), GLUCONO-DELTA-LACTONE, FLAVOR (VEGAN SOURCES), OLIVE EXTRACT, VITAMIN B12

Unit dimension: 11.8" x 7.8" x 3.9" • Unit weight: 6.6lbs (3kg)
Case weight: 6.6lbs (Net WT.) • Case pack: 1
Pallet dimensions: 47.24" x 39.37" x 43.30" • Ti x Hi: 20 x 9
Cases in Pallet: 180





GTIN CODE: 60810934030293

DOT FOODS CODE: 722444

Ask your distributor to order Violife from DOT Foods. Or, contact us at UpfieldProfessional.com to learn more about your ordering options.

VIO LIFE JUST LIKE GRATED PARMESAN

INGREDIENTS: FILTERED WATER, POTATO & RICE STARCH, FOOD STARCH-MODIFIED (POTATO), COCONUT OIL, SALT (SEA SALT), RICE PROTEIN, PARMEZAN FLAVOR (VEGAN SOURCES), OLIVE EXTRACT, BETA CAROTENE (COLOR), VITAMIN B12.

Unit dimensions: 9.84" x 8.66" • Unit weight: 17.6oz (1lb 1.6oz/ 500g)
• Case dimensions: 15.74" x 11.81" x 6.10" • Case weight: 11.02lbs (Net WT.) • Case pack: 10 • Pallet dimensions: 47.24" x 39.37" x 62.79" • Ti x Hi: 10 x 9 • Cases in Pallet: 90



GTIN CODE: 10810934030656

DOT FOODS CODE: 722456

Ask your distributor to order Violife from DOT Foods. Or, contact us at UpfieldProfessional.com to learn more about your ordering options.

VIO LIFE JUST LIKE MOZZARELLA SHREDS

INGREDIENTS: FILTERED WATER, COCONUT OIL, FOOD STARCH-MODIFIED (POTATO & CORN), CORN STARCH, SALT (SEA SALT), MOZZARELLA FLAVOR (VEGAN SOURCES), OLIVE EXTRACT, BETA CAROTENE (COLOR), VITAMIN B12.

Unit dimensions: 11.8" x 8.6" • Unit weight: 32.48oz (2lbs/ 907g) • Case dimensions: 15.74" x 11.81" x 6.10" • Case weight: 10lbs (Net WT.) • Case pack: 5 • Pallet dimensions: 47.24"x 39.37" x 62.79" • Ti x Hi: 10 x 9 • Cases in Pallet: 90



GTIN CODE: 10810934030663

DOT FOODS CODE: 722451

Ask your distributor to order Violife from DOT Foods. Or, contact us at UpfieldProfessional.com to learn more about your ordering options.

VIO LIFE JUST LIKE CHEDDAR SHREDS

INGREDIENTS: FILTERED WATER, COCONUT OIL, FOOD STARCH-MODIFIED (POTATO & CORN), CORN STARCH, SALT (SEA SALT), CHEDDAR FLAVOR (VEGAN SOURCES), OLIVE EXTRACT, PAPRIKA EXTRACT & BETA CAROTENE (COLOR), VITAMIN B12.

Unit dimensions: 11.8" x 8.6" • Unit weight: 32.48oz (2lbs/907g) • Case dimensions: 15.74" x 11.81" x 6.10" • Case weight: 10lbs (Net WT.) • Case pack: 5 • Pallet dimensions: 47.24"x 39.37" x 62.79" • Ti x Hi: 10 x 9 • Cases in Pallet: 90





5 X 2.2lbs

GTIN CODE: 10810934030250

DOT FOODS CODE: 722437

14 X 2.2LBS

GTIN CODE: 50810934030258

DOT FOODS CODE: 722457

Ask your distributor to order Violife from DOT Foods. Or, contact us at UpfieldProfessional.com to learn more about your ordering options.

VIO LIFE JUST LIKE CHEDDAR SLICES

INGREDIENTS: FILTERED WATER, COCONUT OIL, FOOD STARCH-MODIFIED (POTATO & CORN), POTATO STARCH, SALT (SEA SALT), CHEDDAR FLAVOR (VEGAN SOURCES), OLIVE EXTRACT, PAPRIKA EXTRACT & BETA CAROTENE (COLOR), VITAMIN B12.

Unit dimension: 1.06" x 5.0" x 5.2"

Unit weight: 7.05 oz (200g)

Case dimension: 8.66" x 5.12" x 5.79"

Case weight: 3.53lbs (Net WT.)

Case pack: 8

Pallet dimensions: 47.24" x 39.37" x 71.5"

Ti x Hi: 41 x 11

Cases in Pallet: 451



VIO LIFE JUST LIKE PROVOLONE SLICES

INGREDIENTS: REGULAR PROVOLONE: FILTERED WATER, COCONUT OIL, FOOD STARCH-MODIFIED (POTATO & CORN), POTATO STARCH, SALT (SEA SALT), FLAVOR (VEGAN SOURCES), OLIVE EXTRACT, BETA CAROTENE (COLOR), VITAMIN B12.

Unit dimension: 1.06" x 5.0" x 5.2"

Unit weight: 7.05 oz (200g)

Case dimension: 8.66" x 5.12" x 5.79"

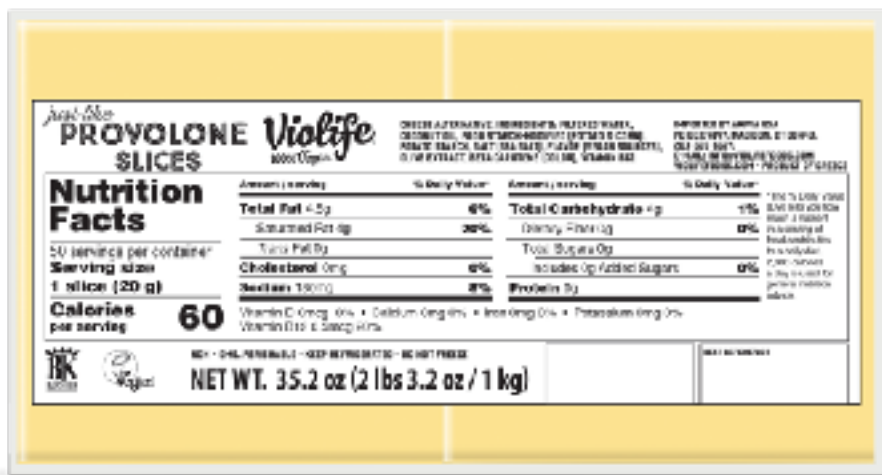
Case weight: 3.53lbs (Net WT.)

Case pack: 8

Pallet dimensions: 47.24" x 39.37" x 71.5"

Ti x Hi: 41 x 11

Cases in Pallet: 451



5 X 2.2lbs

GTIN CODE: 10810934030502

DOT FOODS CODE: 722453

14 X 2.2LBS

GTIN CODE: 10810934030274

DOT FOODS CODE: 722455

Ask your distributor to order Violife from DOT Foods. Or, contact us at UpfieldProfessional.com to learn more about your ordering options.

VIO LIFE JUST LIKE FETA

INGREDIENTS: FILTERED WATER, COCONUT OIL, POTATO STARCH, SALT (SEA SALT), GLUCONO DELTA LACTONE, FLAVOR (VEGAN SOURCES), OLIVE EXTRACT, VITAMIN B12.

Unit dimensions: 4.52" x 9.84" x 2.16" • Unit weight: 8.10oz

(2.64lbs 1.2kg) NET WT 48.60oz (3.04lbs 1.38kg) • Case

dimension: 15.74" x 11.81" x 6.10" • Case weight: 21.16lbs (Net

WT.) • Case pack: 8 • Pallet dimensions: 47.24" x 39.37" x 56.69"

• Ti x Hi: 10 x 8 • Cases in Pallet: 80



GTIN CODE: 70810934030238

DOT FOODS CODE: 722441

Ask your distributor to order Violife from DOT Foods. Or, contact us at UpfieldProfessional.com to learn more about your ordering options.